

DUCAR

Diagramme de pièces *Parts diagram*



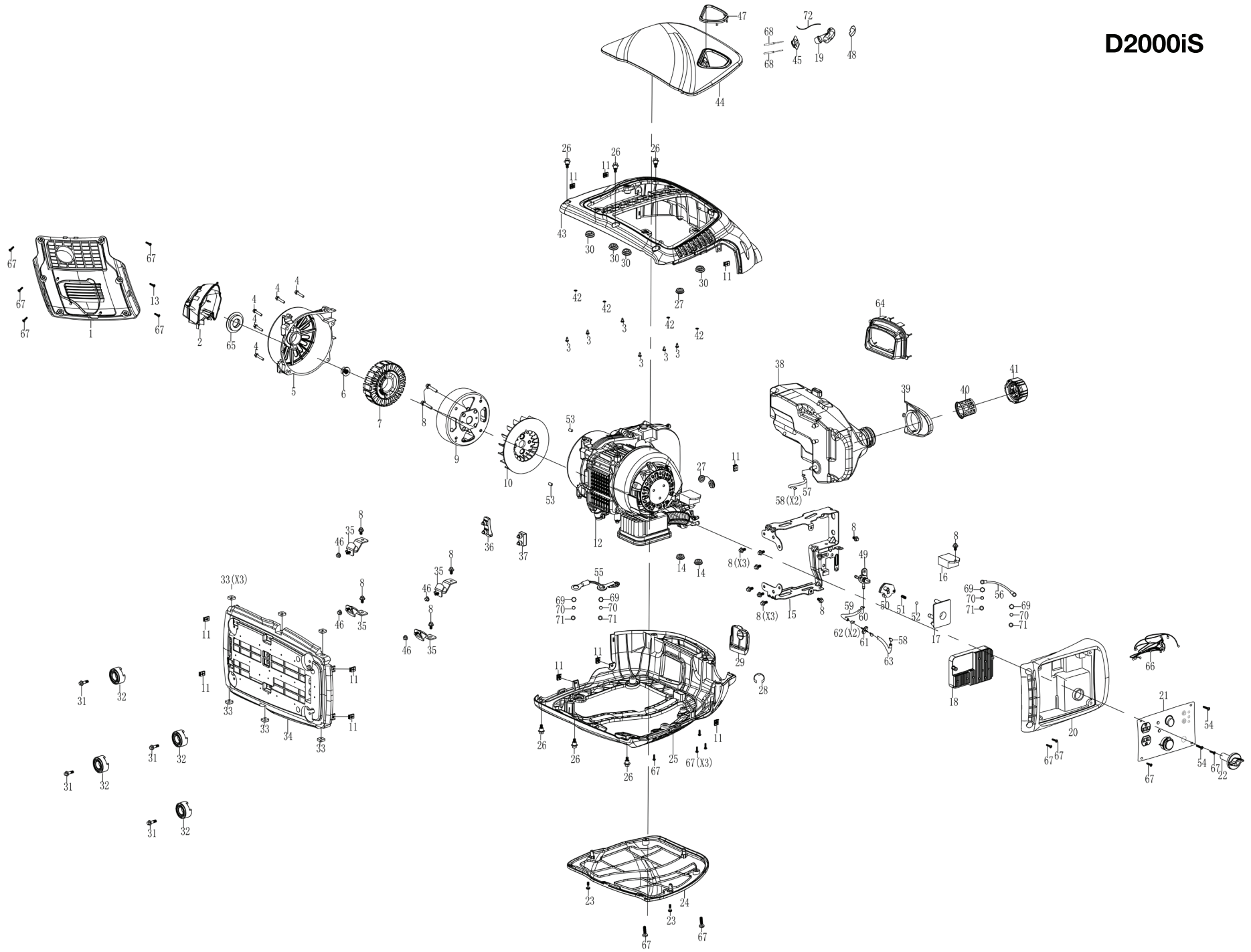
Le modèle peut différer légèrement de la photo / *The model may differ slightly from the picture*

D2000iS

Génératrice à onduleur *Inverter generator*

MTI
CANADA

D2000iS



Spare parts for the D2000iS Inverter generator			
NO.	Code	Description	quantity
1	500013	Muffler baffle	1
2	202501	SHIELD, MUFFLER 1	1
3	92014	CROSS RECESSED PAN HEAD BOLTS ST4.2X13	6
4	91334	BOLT M6X30	5
5	500036	Motor fixed hood	1
6	90014	NUT M12	1
7	752010	STATOR	1
8	91325	Reel bolt M6X12	15
9	752008	ROTATOR	1
10	500037	The motor fan	1
11	500045	Lock clamp M5	10
12	110008010001	Engine Assy	1
13	92032	The trough pan head screws M4X16	1
14	500009	VIBRATION ISOLATION PAD C	2
15	500020	Inverter stents	1
16	500049	Dc voltage stabilizer	1
17	500011	The oil switch fixed frame	1
18	500024	inverter	1
19	500018	Shake handhandle	1
20	500042	Panel back cover	1
21	713239	PANEL COMP	1
22	500016	A knob	1
23	92012	Stop bolt M5X18	2
24	500025-026	The left panel	1
25	500028-026	The left frame	1
26	92003	Hex flang bolts M6X20	6
27	500008	VIBRATION ISOLATION PAD B	3
28	500027	STOP	1
29	500031-026	The gates	1
30	500007	VIBRATION ISOLATION PAD A	4
31	91330	Reel bolt M6X20	4
32	500034	Chassis suspension rubber pad	4
33	90027	Square nut M6	6
34	500002	floor	1
35	500033	Damping bearing	4
36	500040	Motor vibration damping pad	1
37	500035	Engine vibration damping pads	1
38	700210	The fuel tank assembly	1
39	500032	Oil drain	1
40	500010	screen	1
41	500005	The cap	1
42	99519	FLAT WASHER	4
43	500029-026	The right frame	1
44	500041-026	The right panel	1
45	500019	Pull on the rope guide plate	1
46	90016	NUT M6	4
47	500030	HANDLE DECORATED	1

48	500017	COVER,STARTER GRIP	1
49	500006	FUEL SWITCH	1
50	500015	PUII THE TRAY	1
51	500012	SPRING	1
52	500003	STEEL BALL	1
53	240904	DOWEL PIN,CASECOVER	2
54	92013	CROSS RECESSED PAN HEAD SCREW + GASKET COMBINATION M5X35	2
55	500044	GROUNDING WIRE	1
56	500026	EARTH WIRE	1
57	95431	FUEL HOSE	1
58	94411	CLIP,FUEL LINE Φ 11X0.8	3
59	95430	FUEL HOSE Φ 7X Φ 5X40mm	1
60	94410	CLIP,FUEL LINE Φ 9X0.8	1
61	516401		1
62	94413	CLIP,FUEL LINE Φ 10	2
63	95470	FUEL LINE	1
64	202601	MUFFLER COVER SEAL RUBBER	1
65	500039	INLET COVER	1
66	500001	Deputy wiring harness	1
67	91825	CROSS RECESSED PAN HEAD SCREW + GASKET COMBINATION M5X12	15
68	92001	OPEN TYPE OVAL HEAD BLIND RIVETS Φ 3X15	2
69	94002	TOOTH TYPE GASKET Φ 6	4
70	94204	SPLIT LOCK WASHER Φ 5	4
71	94219	FLAT WASHER Φ 5	4
72	500014	PULL	1